



**Hawkins/Spear Lake**

**848 acres**



**OFFERED BY:  
RUTLEDGE INVESTMENT COMPANY  
5160 SANDERLIN, SUITE ONE  
MEMPHIS, TN 38117  
(901) 766-9041**

**Category: Sold**

**Price: \$ 4,050,000**

---

## Hawkins/Spear Lake

**Area:** 848 acres

**Type:** Cropland

---

### **Description:**

The Hawkins/Spear Lake Farm is a 566 acre precision leveled rice, corn and soybean farm in Mississippi and Poinsett Counties Arkansas.

The Waskom/Marked Tree Farm is a 282.2 acre precision leveled rice, corn, and soybean farm in Poinsett County, Arkansas.

### **Location:**

The Hawkins/Spear Lake farm is located in a great farming community in Northeast Arkansas 3.8 miles southeast of Lepanto and 6.7 miles northeast of Marked Tree.

The Waskom/Marked Tree Farm is located 2.7 miles northeast of Marked Tree

### **Acreage:**

Hawkins/Spear Lake – 566.15 acres, 470.92 cultivated

Waskom /Marked Tree – 282.2 acres, 262.9 cultivated

### **Soils:**

Primarily Sharkey Steele Complex and Sharkey Clay Class III Soils for both tracts

### **Lease:**

Expires 12/31/2016

### **Improvements:**

7 Irrigation Wells on Hawkins Spear Lake 2 Irrigation Wells on Waskom Marked Tree

### **Financing:**

Rutledge Investment Company offers competitive financing options to qualified borrowers.

By appointment only. For appointment please contact:

Gwin Smith, Stephen Rainer, and Shelby Smith

5160 Sanderlin Avenue, Suite One

Memphis, TN 38117

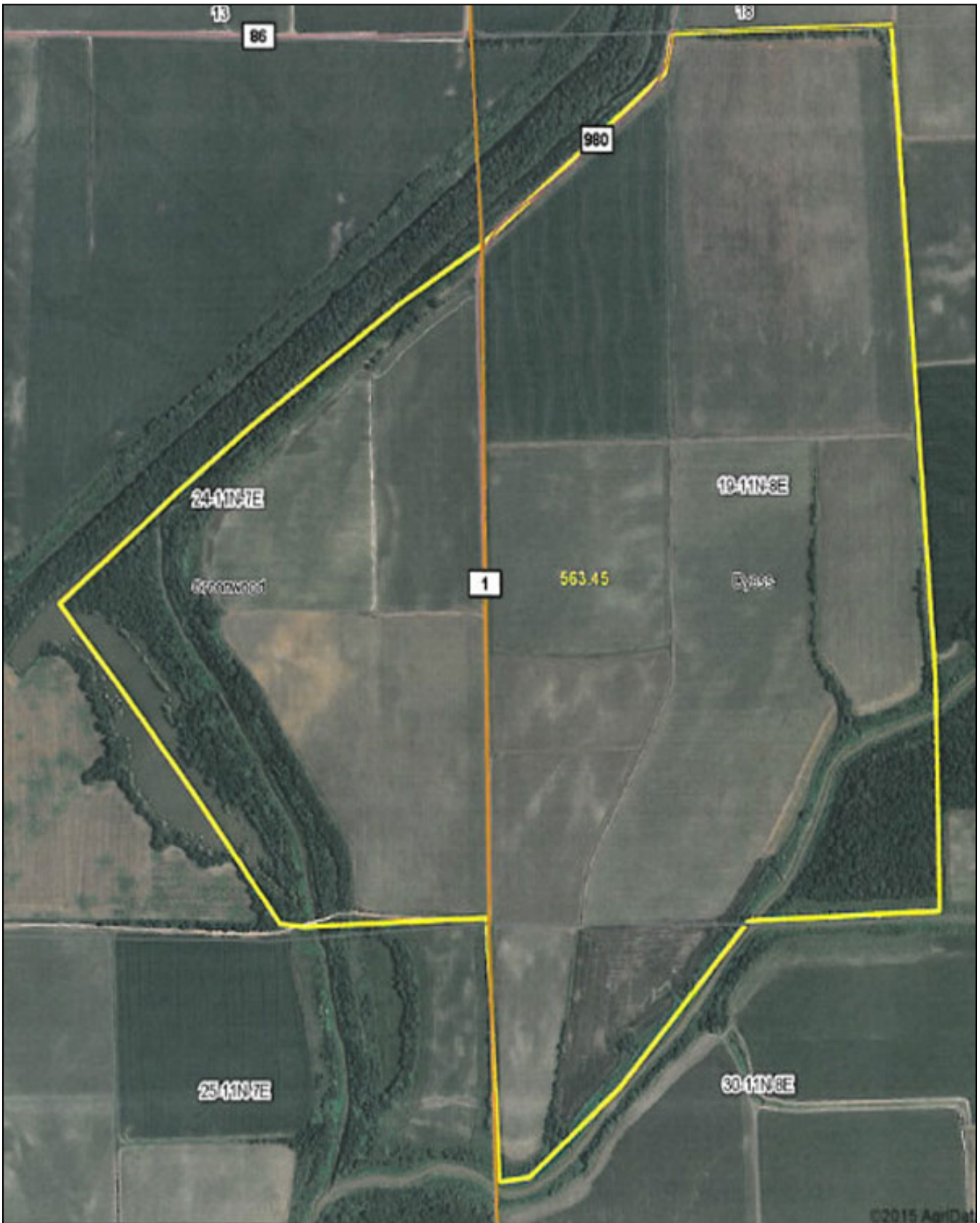
(901) 766-9041

Email: [gwin@rutledgeinvestment.com](mailto:gwin@rutledgeinvestment.com)

[stephen@rutledgeinvestment.com](mailto:stephen@rutledgeinvestment.com)

[shelby@rutledgeinvestment.com](mailto:shelby@rutledgeinvestment.com)

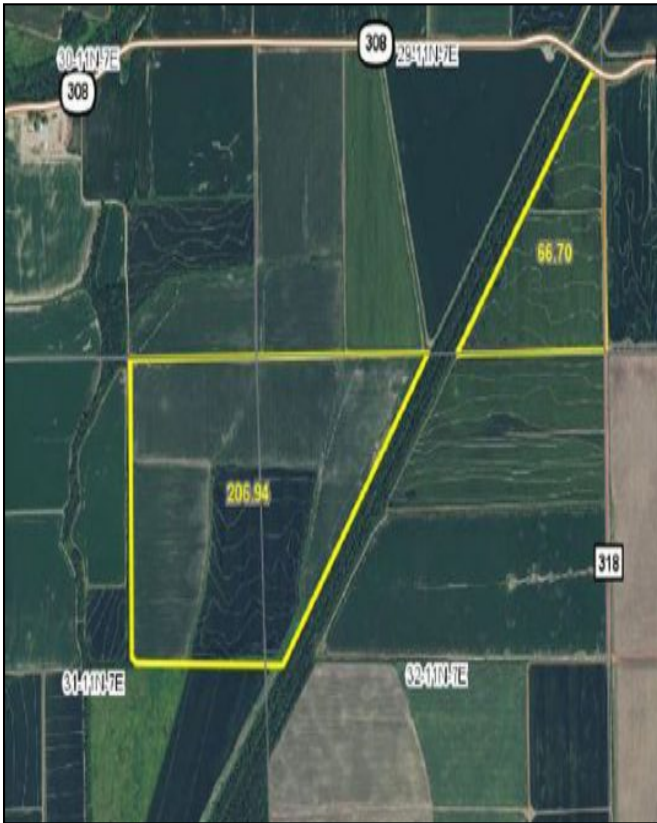
# Hawkins/Spear Lake



Rutledge Investment Company and Rainer Realty are the Exclusive Agents for the property described herein. This brochure and all information contained herein is believed to be correct; however, we make no guarantee as to its accuracy. Prospective buyers are urged to inspect the property and perform their own independent due diligence. Rutledge Investment Company, Rainer Realty, and its agents assume no liability as to errors, omissions or investment results.



# Hawkins/Spear Lake



©2015 AgriData, Inc.

State: Arkansas  
 County: Mississippi  
 Location: 19-11N-8E  
 Township: Dyess  
 Acres: 563.45  
 Date: 10/30/2015

**RIC** Rutledge Investment Company

Map Provided By **surety**

©2015 AgriData, Inc.

Soils data provided by USDA and NRCIS.

Code	Soil Description	Acres	Percent of field	Non-Irr Class Legend	Non-Irr Class %	NCCPI Overall
Sm	Sharkey-Sisole complex	343.30	60.9%		IIIe	49
Ss	Sharkey-Sisole complex	108.09	19.2%		IIIe	44
Sr	Sharkey clay, 0 to 1 percent slopes, protected	55.72	9.9%		IIIe	38
Ss	Sharkey silty clay, 0 to 1 percent slopes, protected	42.22	7.5%		IVa	54
W	Water	8.12	1.4%			0
W	Water	8.94	1.6%			0
<b>Weighted Average</b>						<b>44.4</b>

Area Symbol: AR093, Soil Area Version: 12  
 Area Symbol: AR111, Soil Area Version: 12

\*c: Using Capabilities Class Dominant Condition Aggregation Method

Soils data provided by USDA and NRCIS.

©2016 AgriData, Inc.

State: Arkansas  
 County: Poinsett  
 Location: 32-11N-7E  
 Township: Little River  
 Acres: 273.64  
 Date: 7/15/2016

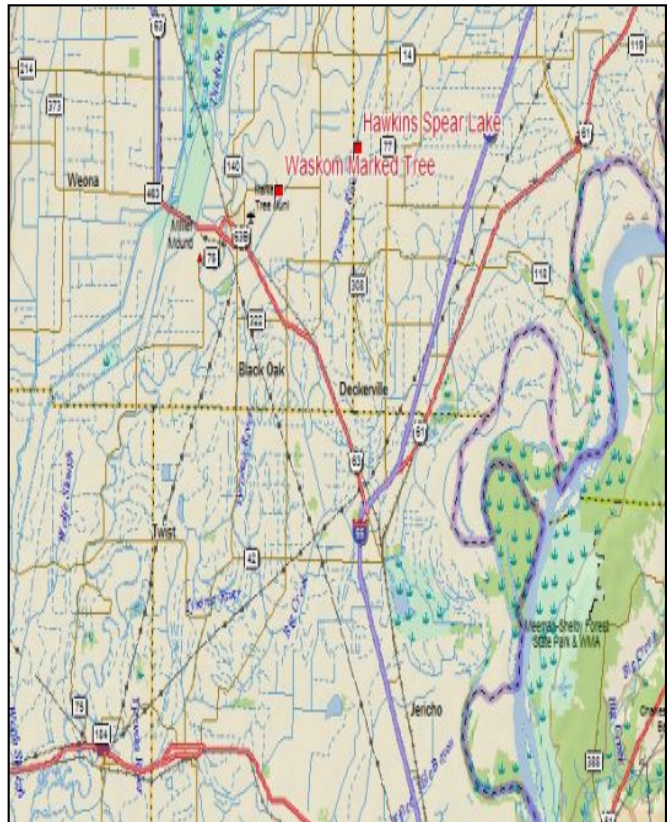
**RIC** Rutledge Investment Company

Map Provided By **surety**

©2016 AgriData, Inc.

Soils data provided by USDA and NRCIS.

Code	Soil Description	Acres	Percent of	Non-Irr Class	Non-Irr	1/4 NCCPI	1/2 NCCPI	3/4 NCCPI Small	1 NCCPI
Area Symbol: AR111, Soil Area Version: 13									



Rutledge Investment Company and Rainer Realty are the Exclusive Agents for the property described herein. This brochure and all information contained herein is believed to be correct; however, we make no guarantee as to its accuracy. Prospective buyers are urged to inspect the property and perform their own independent due diligence. Rutledge Investment Company, Rainer Realty, and its agents assume no liability as to errors, omissions or investment results.