



M. Vaughan River Tract

225 acres



**OFFERED BY:
RUTLEDGE INVESTMENT COMPANY
5160 SANDERLIN, SUITE ONE
MEMPHIS, TN 38117
(901) 766-9041**

Category: Sold

Price: \$ 785,000

M. Vaughan River Tract

Area: 225 acres

Type: Cropland

Description:

This farm is 225 acres in one tract on the Little Tallahatchie River. 164 acres are in cultivation with 135 acres irrigated by two center pivots.

Location:

This farm is located in an excellent agricultural area of North Mississippi, near Batesville.

Acreage:

225+/- total acres

164.20 +/- tillable acres

135+/- irrigated acres

Improvement:

Two Center Pivot

Lease:

Seller wants to lease back

Financing:

Rutledge Investment offers competitive financing to qualified borrowers.

Showing:

By appointment only. For appointment please contact:

Gwin Smith, Stephen Rainer, and Shelby Smith

5160 Sanderlin Avenue, Suite One

Memphis, TN 38117

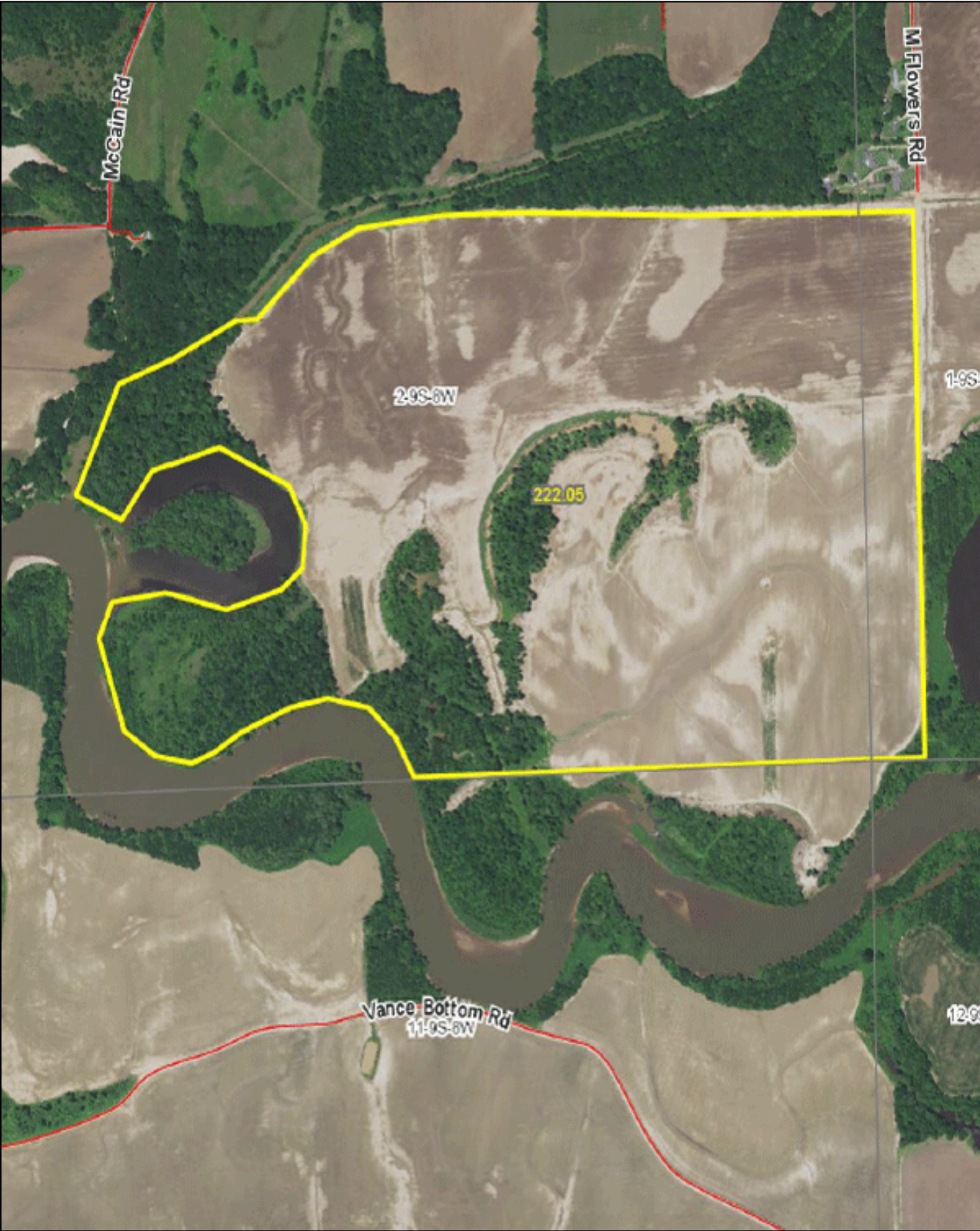
(901) 766-9041

Email: gwin@rutledgeinvestment.com

stephen@rutledgeinvestment.com

shelby@rutledgeinvestment.com

M. Vaughan River Tract



Rutledge Investment Company and Rainer Realty are the Exclusive Agents for the property described herein. This brochure and all information contained herein is believed to be correct; however, we make no guarantee as to its accuracy. Prospective buyers are urged to inspect the property and perform their own independent due diligence. Rutledge Investment Company, Rainer Realty, and its agents assume no liability as to errors, omissions or investment results.

M. Vaughan River Tract